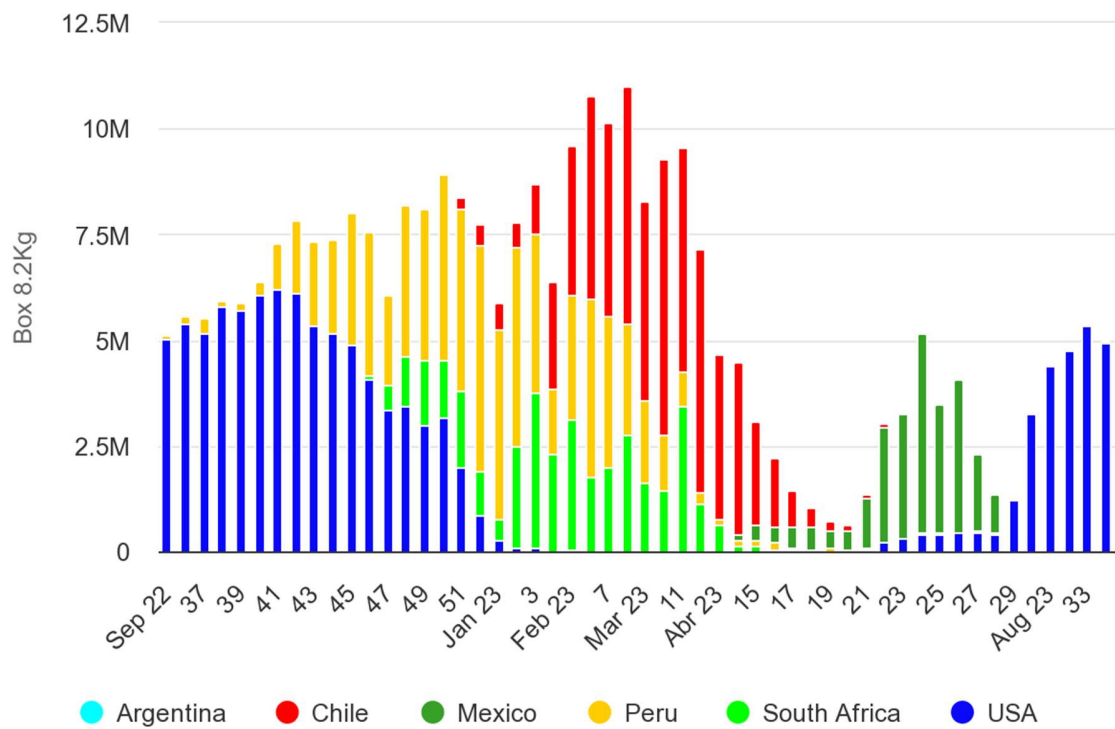


# Table Grape Shipments by Suppliers

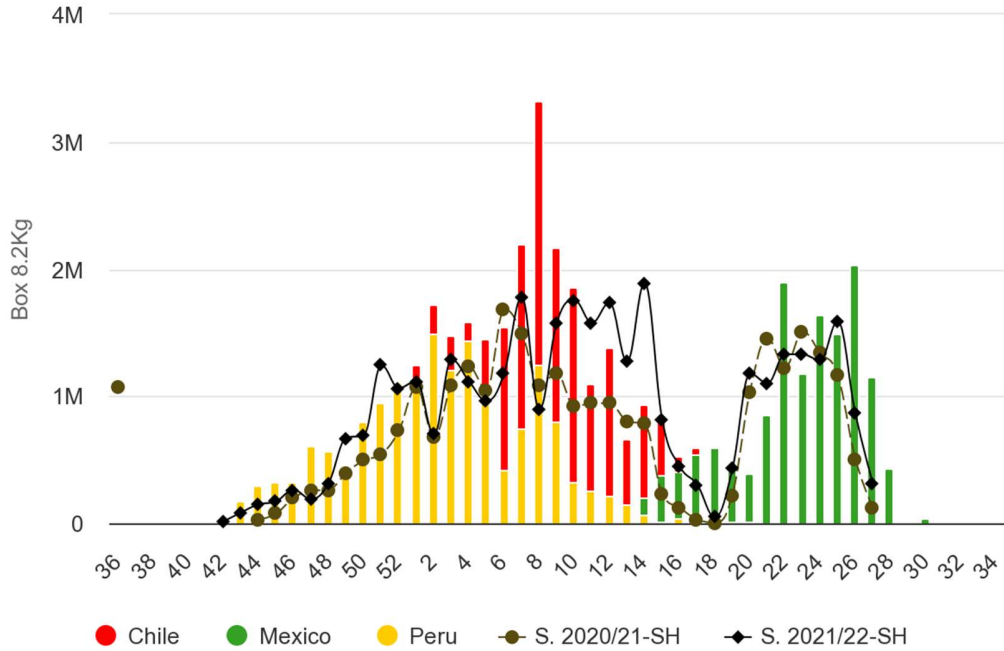
## Season 2022/23

### Figures in Box 8.2Kg



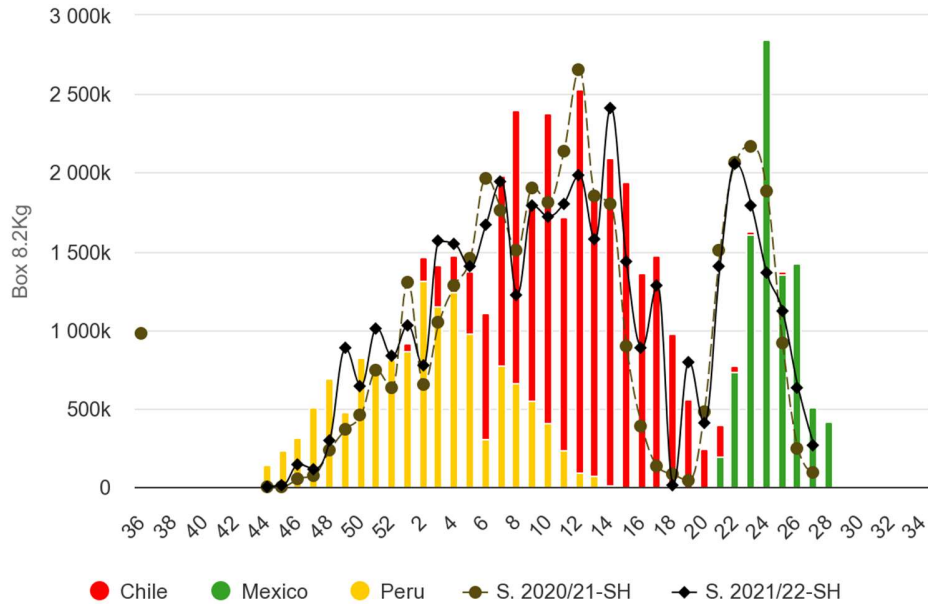
**Table Grape Arrivals  
by Market  
2022 / 2023 SEASON  
Figures in Box 8.2Kg**

**WHITE SEEDLESS GRAPES  
USA MARKET (Box 8.2Kg)  
SEASON 2022/23**



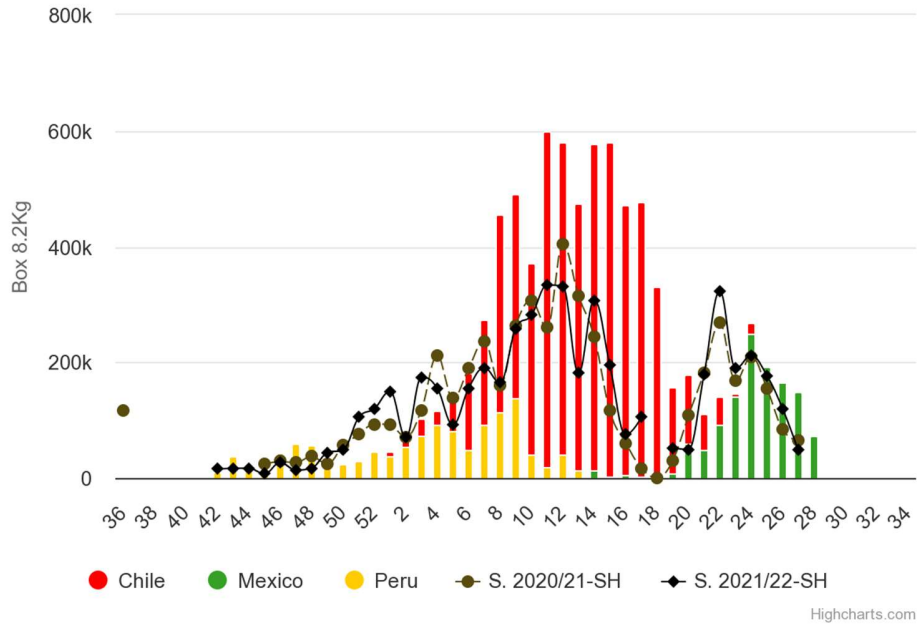
Highcharts.com

**RED SEEDLESS GRAPES  
USA MARKET (Box 8.2Kg)  
SEASON 2022/23**

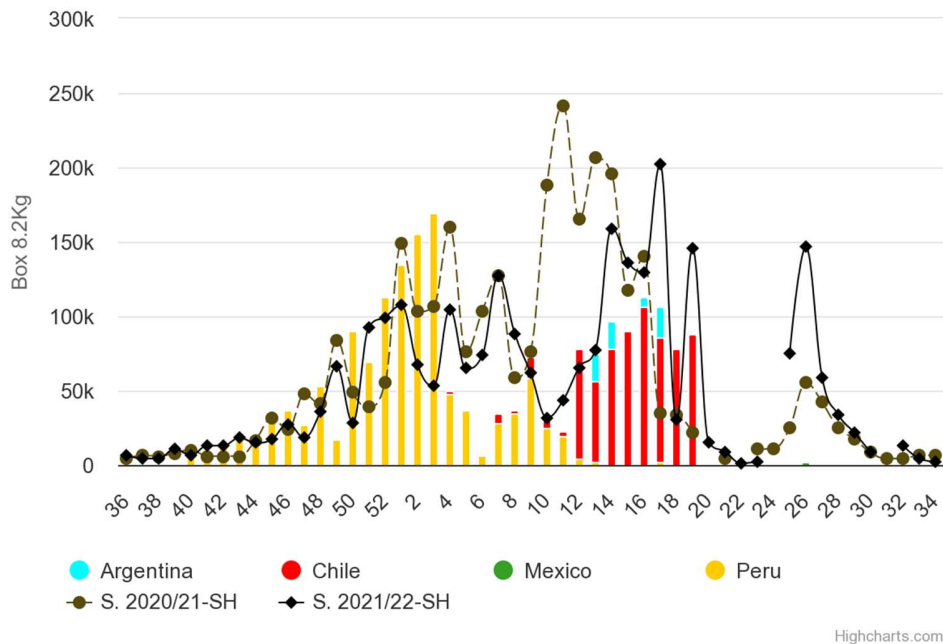


Highcharts.com

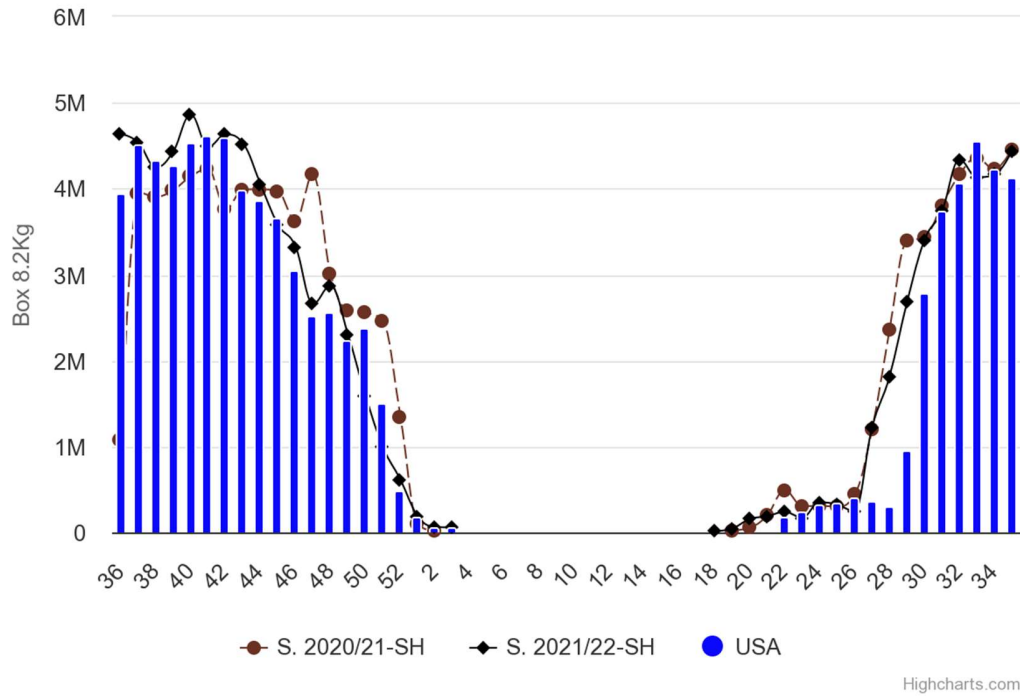
**BLACK SEEDLESS GRAPES**  
**USA MARKET (Box 8.2Kg)**  
**SEASON 2022/23**



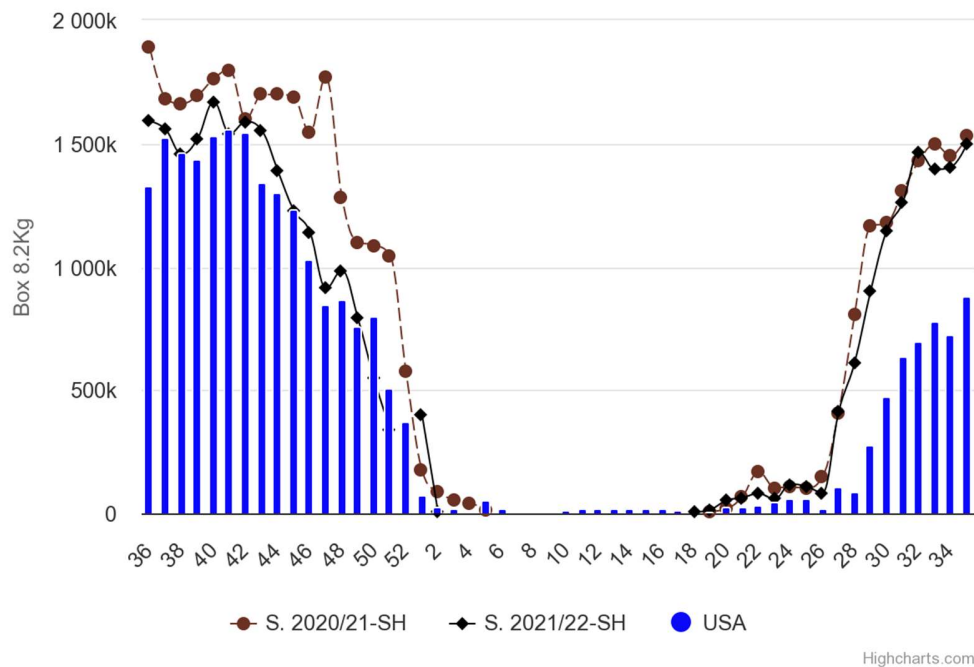
**RED SEEDED GRAPE**  
**USA MARKET (Box 8.2Kg)**  
**SEASON 2022/23**



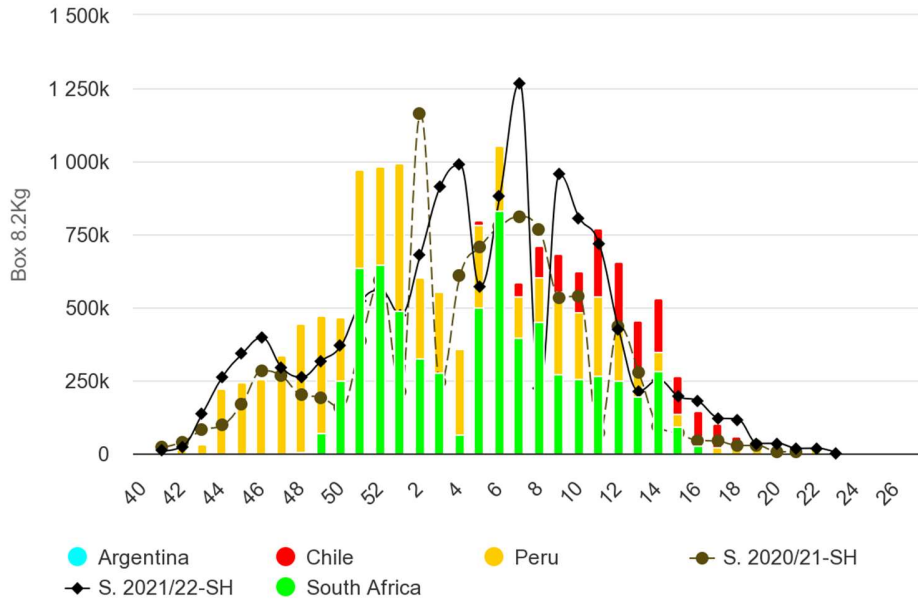
### INTERNAL MARKET USA (Box 8.2Kg) SEASON 2022/23



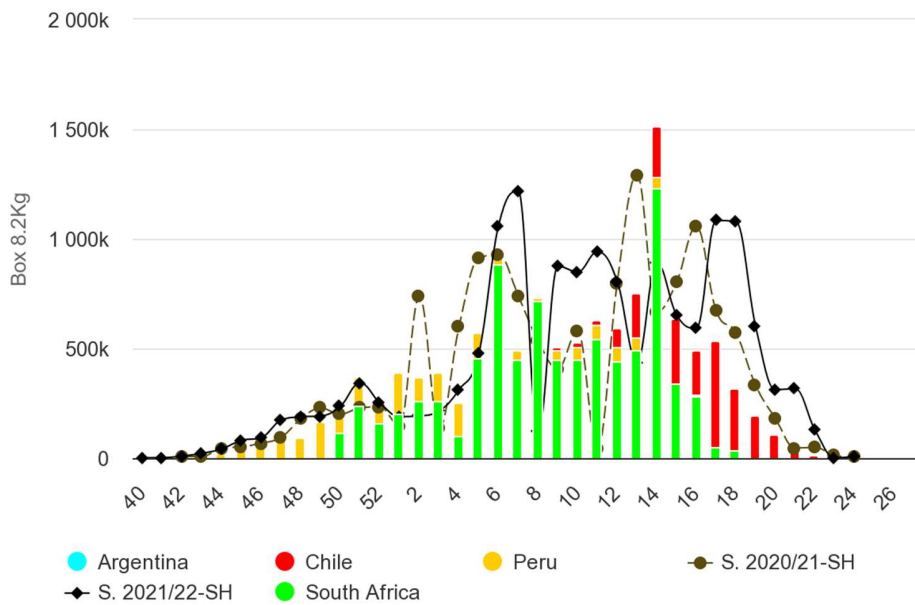
### EXPORTS FROM USA (Box 8.2Kg) SEASON 2022/23



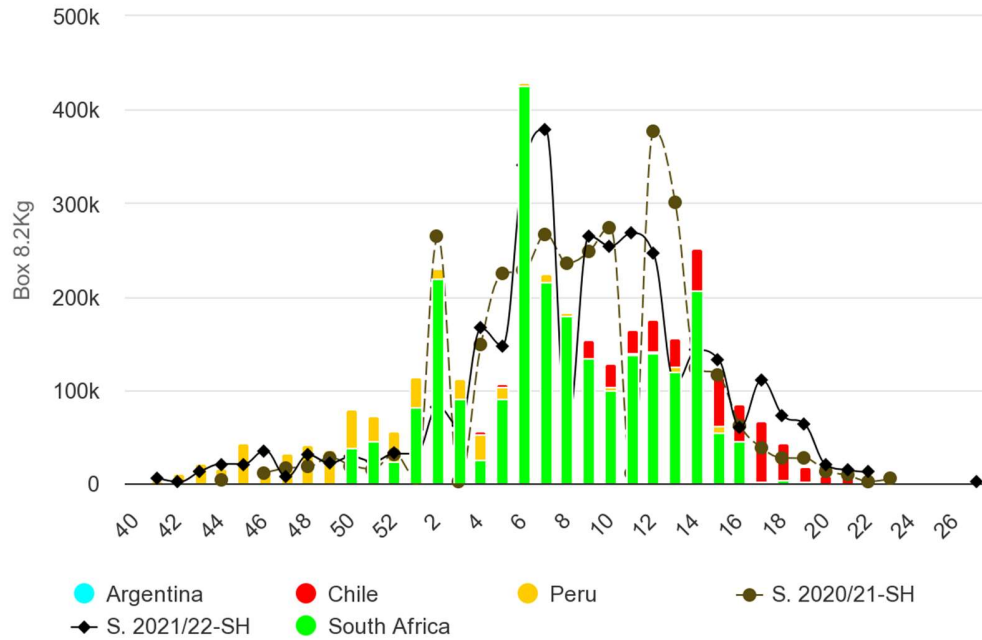
**WHITE SEEDLESS GRAPE**  
**ESTIMATED ARRIVALS IN THE EUROPE CONTINENT (Box 8.2Kg)**  
**SEASON 2022/23**



**RED SEEDLESS GRAPE**  
**EUROPEAN CONTINENT MARKET (Box 8.2Kg)**  
**SEASON 2022/23**

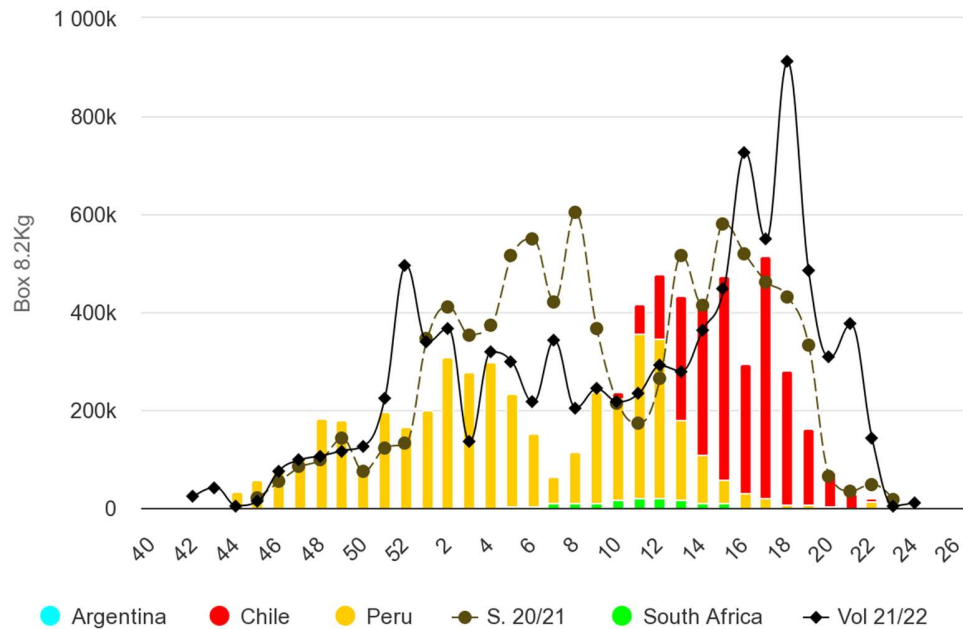


**BLACK SEEDLESS GRAPE  
EUROPEAN CONTINENT MARKET (Box 8.2Kg)  
SEASON 2022/23**



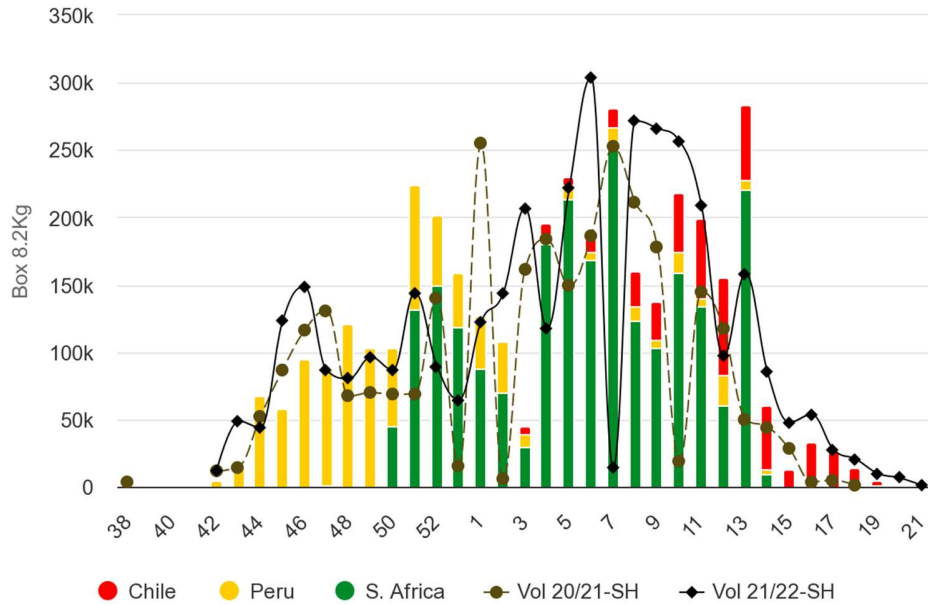
Highcharts.com

**RED SEEDED GRAPE  
EUROPEAN CONTINENT MARKET (Box 8.2Kg)  
SEASON 2022/23**



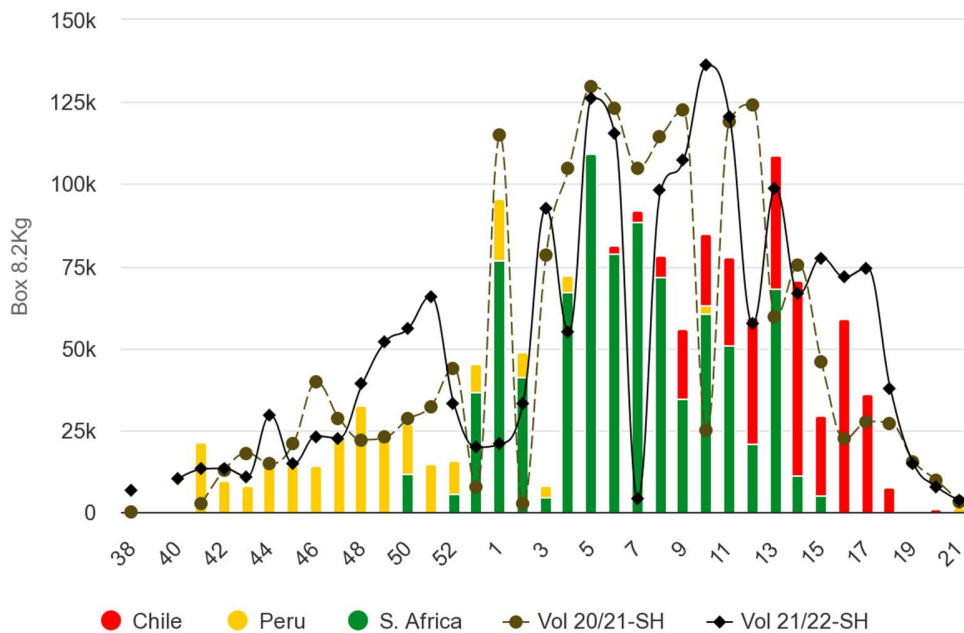
Highcharts.com

**WHITE SEEDLESS GRAPES  
UNITED KINGDOM MARKET (Box 8.2Kg)  
SEASON 2022/23**



Highcharts.com

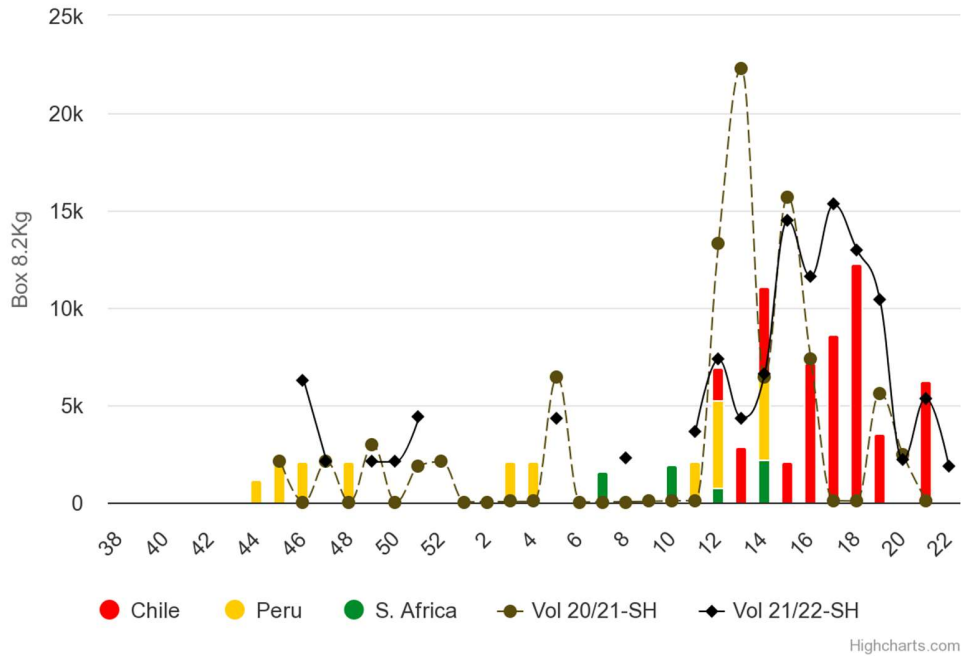
**BLACK SEEDLESS GRAPES  
UNITED KINGDOM MARKET (Box 8.2Kg)  
SEASON 2022/23**



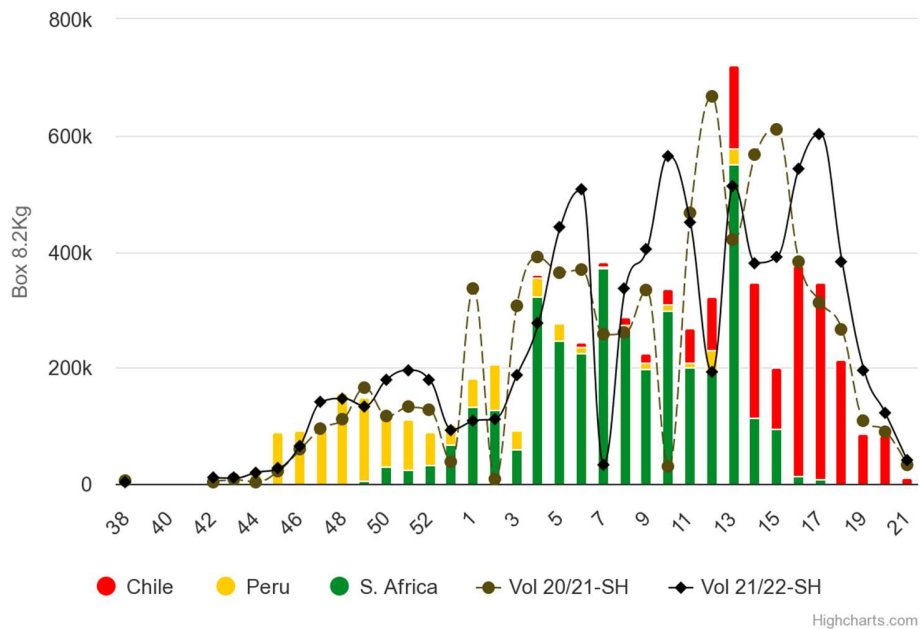
Highcharts.com



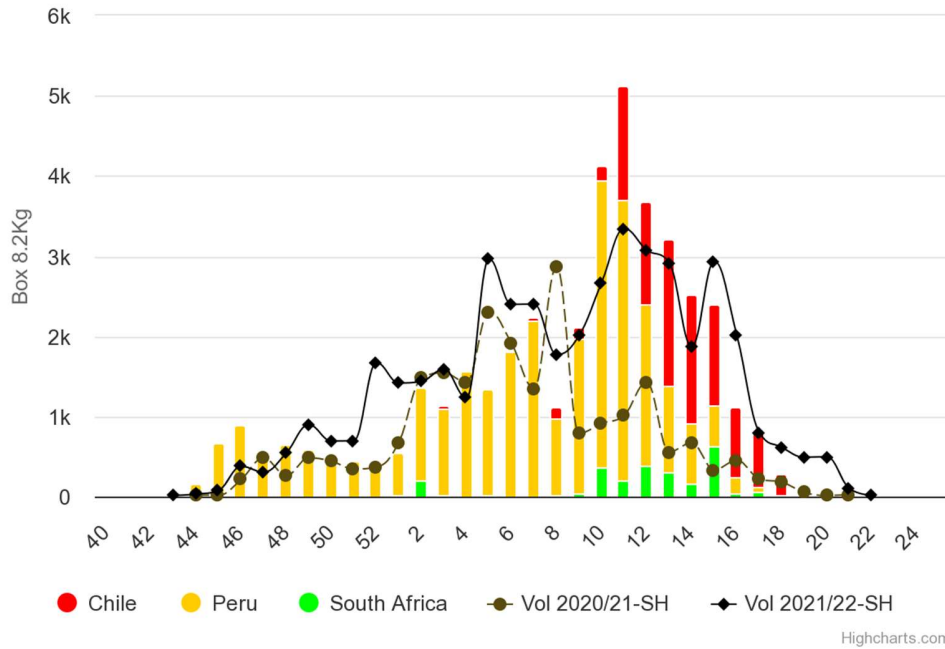
**RED SEEDED GRAPES**  
**UNITED KINGDOM MARKET (Box 8.2Kg)**  
**SEASON 2022/23**



**RED SEEDLESS GRAPES**  
**UNITED KINGDOM MARKET (Box 8.2Kg)**  
**SEASON 2022/23**

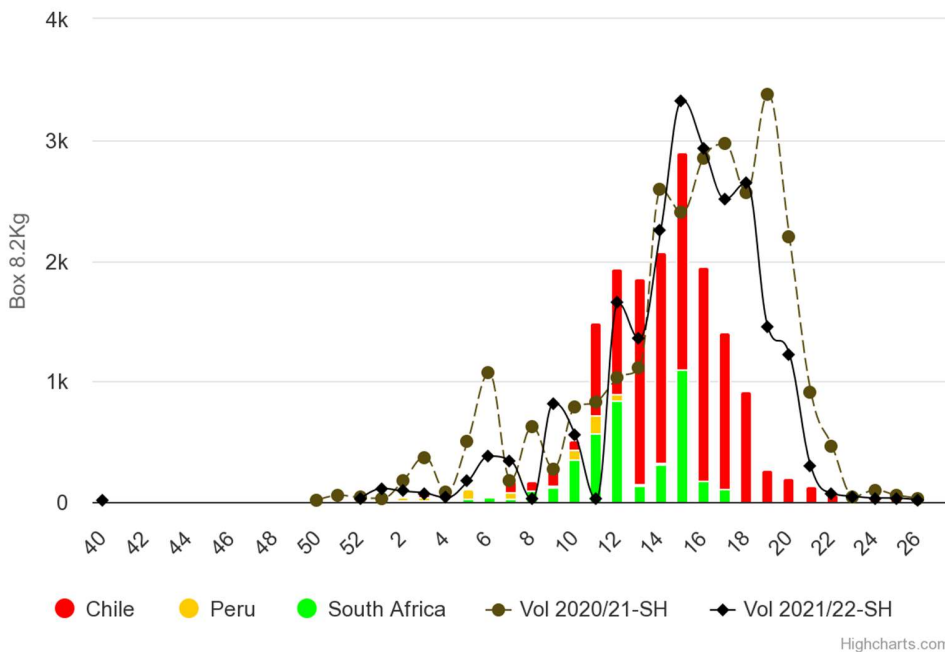


**WHITE SEEDLESS GRAPE**  
**CHINA/HONG KONG (Box 8.2Kg)**  
**SEASON 2022/23**



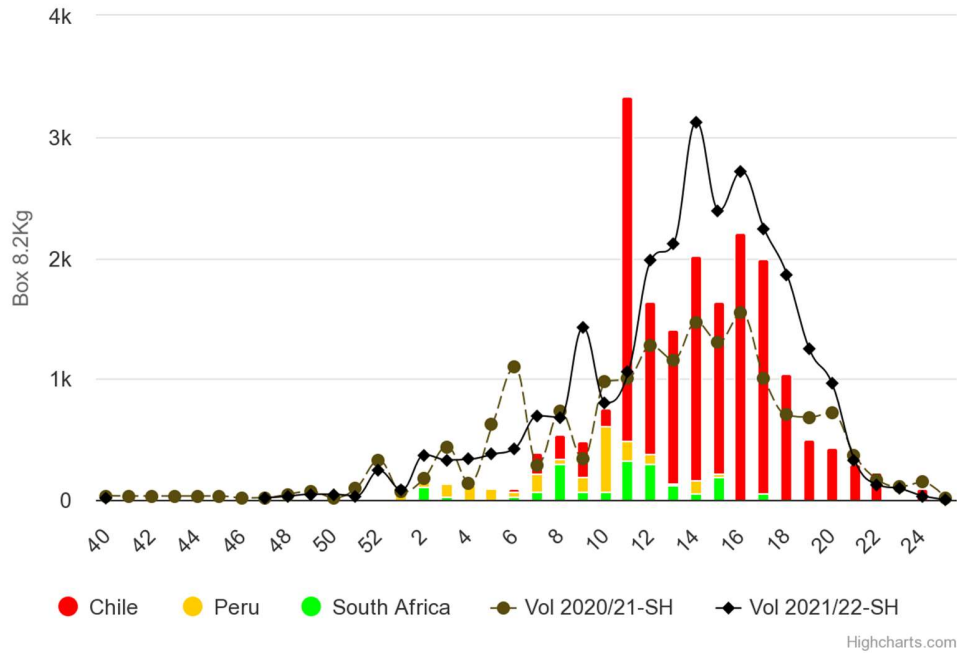
Highcharts.com

**RED SEEDLESS GRAPE**  
**ASIA MARKET (Box 8.2Kg)**  
**SEASON 2022/23**



Highcharts.com

**BLACK SEEDLESS GRAPE**  
**CHINA/HONG KONG (Box 8.2Kg)**  
**SEASON 2022/23**



**RED SEEDED GRAPE**  
**CHINA/HONG KONG MARKET (Box 8.2Kg)**  
**SEASON 2022/23**

